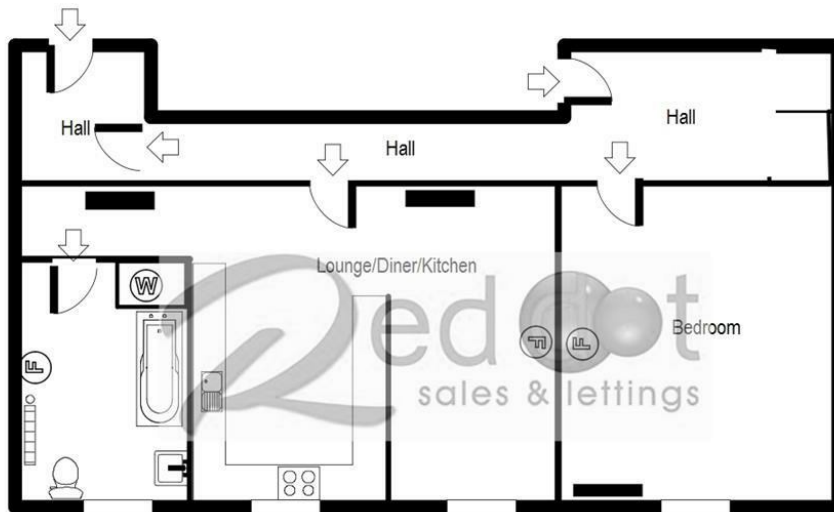




1 Bed
Apartment
located in

£750 Per Month





Whilst every attempt has been made to ensure the accuracy of the floor plan contained here, measurements of doors, windows, rooms and any other items are approximate and no responsibility is taken for any error, omission, or mis-statement and the floor plan is an illustration only as a guide.
 This plan is for illustrative purposes only and should be used as such by any prospective purchaser or tenant.
 The services, systems, appliances, shown have not been tested and no guarantee as to their operation or efficiency can be given.
 Made with Visual Builder

DIRECTIONS

CONTACT

45 Mill Street
 Congleton
 Cheshire
 CW12 1AG

E: congleton@cheshire-property.com
 T: 01260 290090
cheshire-property.com

